

DC Isolator Switch Ultra-thin Handle

ADELS® is a professional manufacturer and supplier of DC Isolator Switch Ultra-thin Handle in China. NL1-T series ultra-thin handle DC isolation switch, 4 poles 1200V 32A, used to disconnect the circuit between solar panel and controller. On the handle, we use the best quality material parts, the ultra-thin handle makes the touch very good. Their

rugged design makes them ideal for switching photovoltaic systems. In terms of installation operation is also very simple, will not add to your annoyance. Our products also have excellent protection and fire rating to ensure safe use in all weather conditions and temperatures. If you have any questions, please contact us.

Model:NL1-T

ADELS® is a professional China DC Isolator Switch Ultra-thin Handle manufacturers and suppliers, if you are looking for the best DC Isolator Switch Ultra-thin Handle with low price, consult us now!

DC Isolator Switch Ultra-thin Handle

- IP20 Protection Level
- Din rail mounted
- The handle can be locked in the “OFF” position
- 2 Pole, 4 Poles are viable (Single I Double String)
- Standard: IEC60947-3, AS60947.3
- DC-PV2, DC-PV1, DC-2 IB
- 16A, 25A, 32A, 1200V DC

DC Isolator Switch Ultra-thin Handle Application

LI Series DC Isolator Switch is applied to 1~20 KW residential or commercial photovoltaic system, placed between photovoltage modules and inverters. Arcing time is less than 8ms, that keeps solar system more safe. To ensure its stability and long service life, our

Wenzhou Feimai Electric Co., Ltd.

Address:No.75 Xinguang Avenue, Xinguang Industrial Zone, Liushi, Yueqing City, Zhejiang Province, P.R.China.

Phone:+86-13968753197

Fax:+86-577-62797770

Tel:+86-577-62797750

E-mail:sale@adels-solar.com

products are made by components with optimum quality. Max voltage is up to 1200V DC. It holds a safe lead among similar products.

NL1-T Series DC Isolator Switches



Electrical Characteristics

Type	FMPV16-L1/NL1/NL1-T, FMPV25-L1/NL1/NL1-T, FMPV32-L1/NL1/NL1-T
Function	Isolator;Control
Standard	IEC60947-3, AS60947. 3
Utilization category	DC-PV2/DC-PV1/DC-21B
Pole	4P
Rated frequency	DC
Rated operational voltage (Ue)	300V, 600V, 800V, 1000V, 1200V
Rated operational voltage (Ie)	See the next page
Rated insulation voltage (Ui)	1200V
Conventional free air thermal current (Ithe)	//

Wenzhou Feimai Electric Co., Ltd.

Address:No.75 Xinguang Avenue, Xinguang Industrial Zone, Liushi, Yueqing City, Zhejiang Province, P.R.China.

Phone:+86-13968753197

Fax:+86-577-62797770

Tel:+86-577-62797750

E-mail:sale@adels-solar.com

Conventional enclosed thermal current (I_{th})	Same as before
Rated short-time withstand current (I_{cw})	1kA, 1s
Rated impulsive withstand voltage (U_{imp})	8.0kV
Overvoltage category	II
Suitability for isolation	Yes
Polarity	No polarity, "+" and "-" polarities could be interchanged

Service life/cycle operation

Mechanical	18000
Electrical	2000

Installation Environment

Ingress protection Switch Body	IP20
Storage temperature	-40 [^] ~ +85P
Mounting Type	Vertically or horizontally
Pollution degree	3

Rated Voltage / Rated Current

Wiring	Type	300V	600V	800V	1000V	1200V
2P/4P	FMPV16 series	16A	16A	12A	8A	6A
	FMPV25 series	25A	25A	15A	9A	7A
	FMPV32 series	32A	27A	17A	10A	8A
4T/4B/4S	FMPV16 series	16A	16A	16A	16A	16A
	FMPV25 series	25A	25A	25A	25A	25A
	FMPV32 series	32A	32A	32A	32A	32A
2H	FMPV16 series	35A	35A	/	/	/

Wenzhou Feimai Electric Co., Ltd.

Address:No.75 Xinguang Avenue, Xinguang Industrial Zone, Liushi, Yueqing City, Zhejiang Province, P.R.China.

Phone:+86-13968753197

Fax:+86-577-62797770

Tel:+86-577-62797750

E-mail:sale@adels-solar.com

	FMPV25 series	40A	40A	/	/	/
	FMPV32 series	45A	40A	/	/	/

Switching Configurations

Type	2-pole	4-pole	2-pole4 -pole in series Input and Output bottom	2-pole4 -pole in series Input and Output on top	2-pole4 -pole in series Input on top Output bottom	2-pole 4 parall eled Poles
/	2P	4P	4T	4B	4S	2H
Conta cts Wirin g graph						
Switc hing exapl e						

Dimensions(mm)

Wenzhou Feimai Electric Co., Ltd.

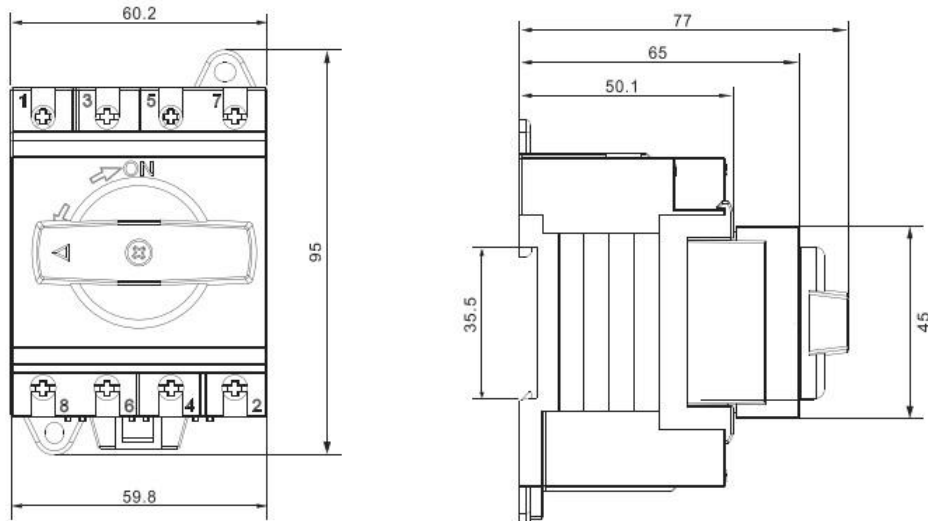
Address:No.75 Xinguang Avenue, Xinguang Industrial Zone, Liushi, Yueqing City, Zhejiang Province, P.R.China.

Phone:+86-13968753197

Fax:+86-577-62797770

Tel:+86-577-62797750

E-mail:sale@adels-solar.com



The NL1-T Series DC Isolator Switch Ultra-thin Handle have been specifically designed to switch Direct Current (DC) at voltages up to 1200Volts. Their robust design and ability to switch such voltages, at rated current, mean that they are ideally suited to be used in the switching of Photovoltaic (PV) systems.

The DC switch achieves ultra-rapid switching through a patented 'Snap Action' spring driven operating mechanism. When the front actuator is rotated, energy is accumulated in the patented mechanism until a point is reached at which the contacts are fired open or closed. This system will operate the switch under load within 5ms thereby reducing the arcing time to a minimum.

In order to reduce the chances of an arc propagating, the NL1-T Series switch employs rotary contact technology. This is designed to make and break the circuit through a revolving double break contact assembly that wipes as it moves. The wiping action has the added advantage of keeping the contact faces clean thereby reducing the circuit resistance and increasing the life of the switch.

Wenzhou Feimai Electric Co., Ltd.

Address:No.75 Xinguang Avenue, Xinguang Industrial Zone, Liushi, Yueqing City, Zhejiang Province, P.R.China.

Phone:+86-13968753197

Fax:+86-577-62797770

Tel:+86-577-62797750

E-mail:sale@adels-solar.com